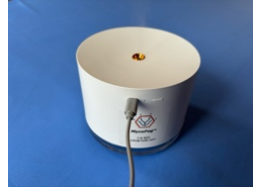


MycoFog™ Quick Start guide

[Please consult full manual at 7pt8.com](http://7pt8.com)

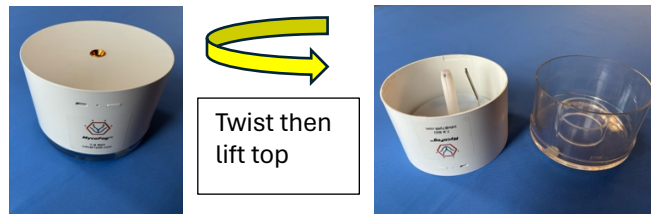
Day before use: Charge MycoFog™ Device with supplied cable.



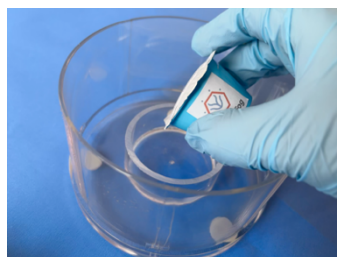
> 8 hours

Day of use: Take out all cell cultures from incubator, set Incubator to **45°C**, turn off CO₂ (and O₂) gas control and remove water pan or turn off active humidification.

1. Open MycoFog™



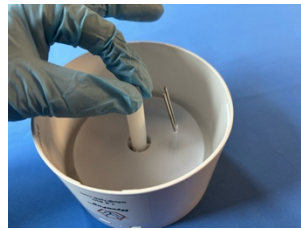
2. Pour MycoFog™ Reagent into reagent reservoir of MycoFog™



3. Prime wick for 60 seconds in reagent reservoir of MycoFog™



4. Insert primed end of wick into upper compartment by removing and replacing protector over wick, press firmly. Replace top of MycoFog™.

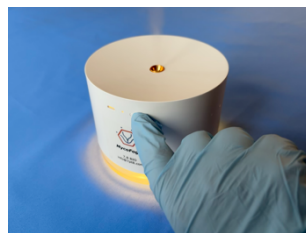


5. Place MycoFog™ in incubator, mid-shelf, wait 5 minutes.



5 minutes

6. Press Start



7. Close incubator door set timer.



180 Minutes (or 240 mins if using 25 ml pods)

8. Remove MycoFog, return temperature to 37°C and start using incubator!