



canopy

quickstart guide

Cerillo's canopy is a networking device that enables wireless connection between your computer and other cerillo devices.

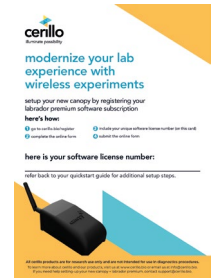
included in this shipment:



canopy (1)



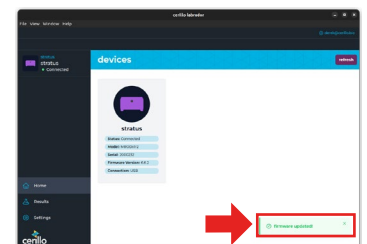
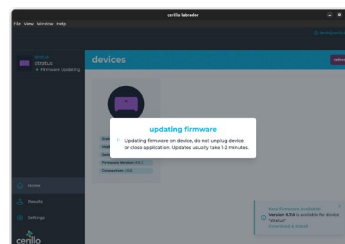
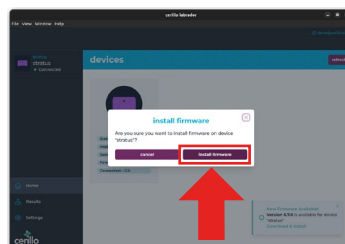
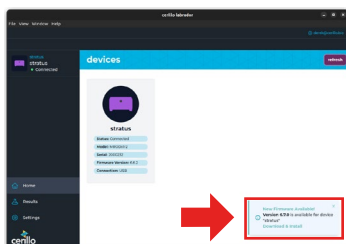
USB cable (1)



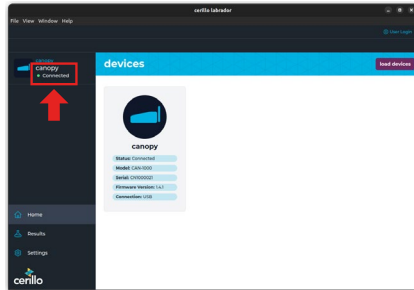
license card (1)

steps

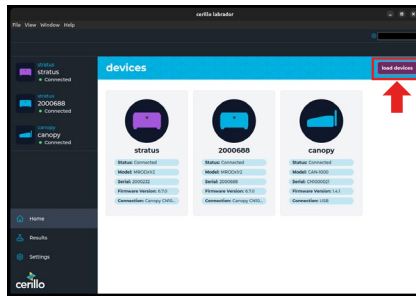
1. Confirm receipt of all components and canopy device (shown above).
2. Register for your labrador premium subscription using the following steps:
 - Go to cerillo.bio/register/
 - Fill out the online form.
 - Be sure to review the details on the confirmation page.
3. After you register online, you'll receive an email from cerillo. This email will contain the instructions granting you access to the labrador premium software.
4. Follow the emailed instructions.
5. Your microplate reader may need a firmware update to wirelessly connect to your canopy. To ensure compatibility, plug your device into the computer using a USB cable.
6. The software will automatically detect the firmware version of your microplate reader. If an update is needed, the software will prompt you to update the firmware.



- Once you have verified that your microplate reader has the latest firmware, you can disconnect it from the computer.
- Connect the canopy to your computer using the provided USB cable. Once connected, an LED on the canopy will illuminate. Please note, it may take a minute or more for the light to illuminate.



- If you don't see your device listed in the software, then you may need to click the "load devices" button.
- The canopy will connect automatically to your microplate reader. This may take up to 3 minutes. Afterwards, you can click "load devices" to begin using your device wirelessly!



additional information:

- ▶ If you're unable to see your microplate reader after following step 10, power cycling your device may resolve any issues.
- ▶ Within the software, you can view and connect to cerillo devices and wirelessly transmit data.
- ▶ No wifi or ethernet connection is required for the canopy.
- ▶ The maximum distance between the canopy and cerillo devices is 15 meters.
- ▶ For additional instructions, scan the QR code to the right or navigate to help > user manual within the software.



All cerillo products are for research use only and are not intended for use in diagnostics procedures.

To learn more about cerillo and our products, visit us at www.cerillo.bio or email us at info@cerillo.bio.
If you need help setting up your new canopy and labrador premium software, contact support@cerillo.bio